

Monica

in collab with Gensler

Bulo





Courtesy Gensler Miami

GENSLER

Gensler is a global architecture, design and planning firm with 50 locations and more than 6000 professionals networking across the world. Founded in 1965, the firm serves more than 3500 active clients in virtually every industry. Gensler's product development team has selectively worked with manufacturers to design hundreds of successful products. From project brief to prototyping to finalizing the design, we continuously observed their informed criteria and process. Monica meets Gensler's high standard for form, function, quality and sustainable materiality. In 2019 Bulo and Gensler collaborated to design this lounge collection. Since its first year of production, Monica has become a global favorite design.



Monica

Monica is a soft lounge chair with a solid wooden base and a 'draped' upholstered soft shell resting on it. The duality of the chair is based on contrasts between hard and soft, static and fluid. It's almost as if she is tempting gravity with a soft skin that is hanging over a rigid wooden skeleton. Wood is in Bulo's DNA, so it was an obvious choice to leave the beautifully shaped details visible. Monica is a contemporary piece with vintage look that's well adapted to the technicality and comfort of today. Monica is an ideal choice for contract projects in workplace, hospitality and high-end retail. Monica has also developed a strong identity in residential interiors around the world.

Monica



The shell is made of a metal frame; molded in a HR High Density Flexible PU foam. Material: 52 - 66% Polyolblend & 48 - 34% Isocyanate MDI. The Comfort HR Cold cure foam contains no CFK's. Very high comfort standards are being met with this formula while the molded parts are "crushless" due to the composition of the isocyanate. The foam passes the California technical Bulletin 117 test; Test criteria: no open flaming smouldering \leq 45 minutes, vertical char \leq 38 mm

For most intensive use, it is recommended to use the chrome swivel base with cast-aluminium connection element.

Monica

On 4 solid wood legs



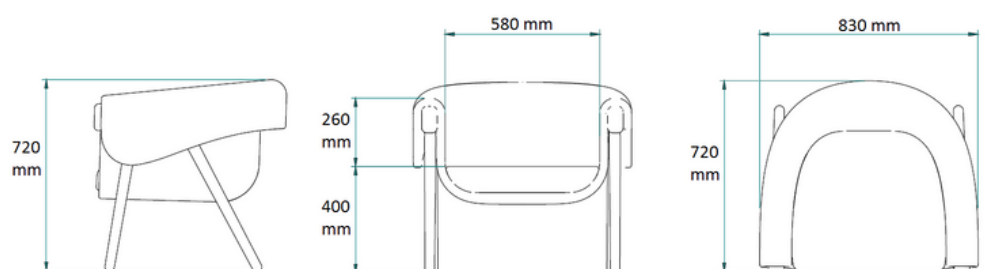
The legs are made from FSC certified solid wood; treated with water-based lacquers that meet the most strict european norms. The legs are fixed with a double bolt connection to a metal frame that curves under the wing of the chair. This method guarantees the highest level of strength and stability for the frame.

Legs available in natural ash, black lacquered ash and natural walnut.
On felt glides or without glides.

Monica on 4 solid wood legs

w 830 mm / 32.5"
d 720 mm / 28"
h 720 mm / 28"

seat height
400 mm / 16"



Monica

On 4-star swivel base



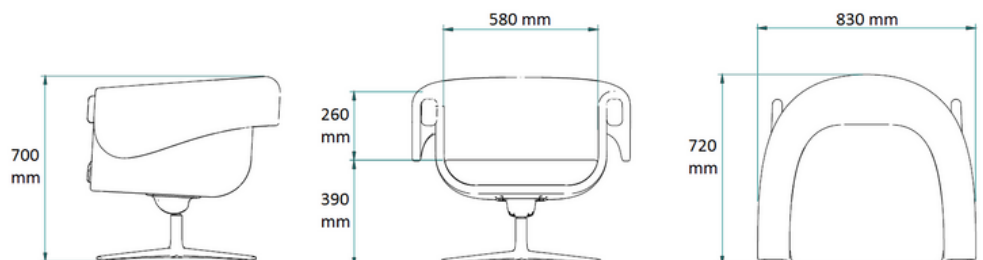
The armrests are made from FSC certified solid wood; treated with water-based lacquers that meet the most strict european norms. The legs are made from steel, certified, ISO 9001:2015, 14001:2015

Available in black and in chrome.
On felt glides.

Monica on 4-star swivel base

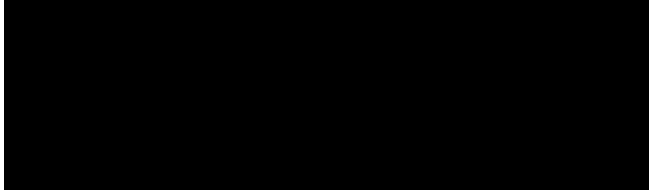
w 830 mm / 32.5"
d 720 mm / 28"
h 700 mm / 27.5"

seat height
390 mm / 15.5"



Materials

Aluminium starbase



Black lacquer

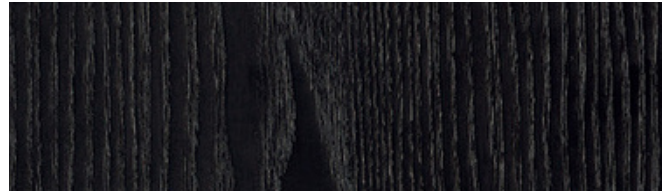


Chrome

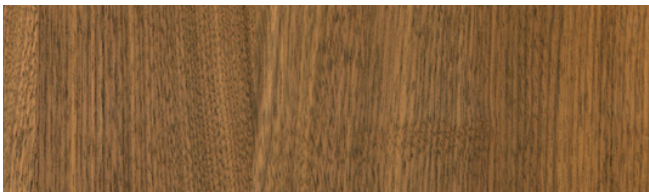
Solid wood



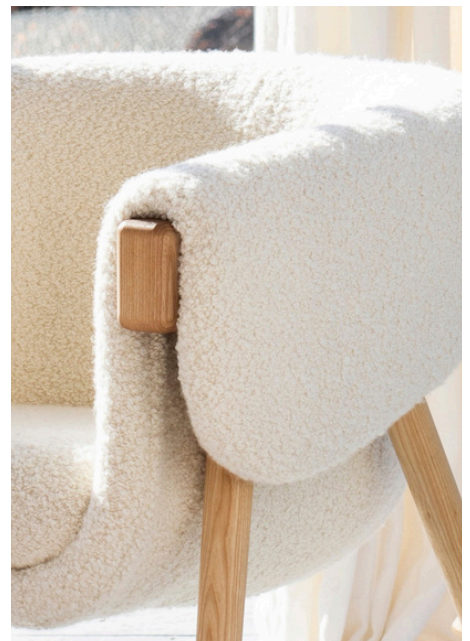
Ash natural



Ash lacquered black



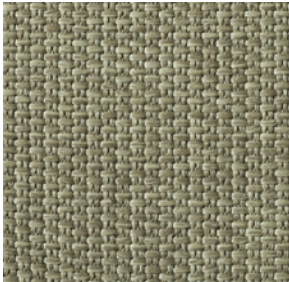
Walnut natural



Upholstery Fabrics

Cico

Category 1 | CI



By Bulo

Composition 100% Polypropylene

Weight 1.063 g/lm

Abrasion 30.000 rubs

Fastness to light 7/8

Flammability TB 177 CALIFORNIA, BS 5852 Cigarette, BS Match - with treatment

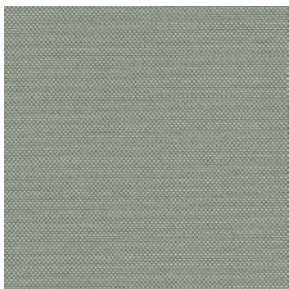
Pilling 4-5 on 5.000 rubs

Sustainability OEKO-TEX standard 100, GREENGUARD gold

All colorways available

Quest

Category 1 | QE



Textile mill Camira

Composition 100% post-consumer recycled polyester including 75% SEAQUAL® YARN

Weight 330g/m2 ±5%

Abrasion Heavy duty / 10 year guarantee. Independently certified to ≥100,000 Martindale cycles

Light resistance 4-6 (ISO 105 - B02)

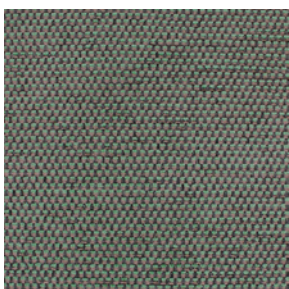
Flammability EN 1021 - 1 (cigarette), EN 1021 - 2 (match), BS 7176 Low Hazard UNI 9175 Classe 1 IM, BS 476 Part 7 Class 1Y (Adhered), EN 13501-1 Adhered Class B, s1, d0, EN 13501-1 Un-adhered Class B, s1, d0, BS 5852 Ignition Source 5 with EnviroFlam5, BS 7176 Medium Hazard with EnviroFlam5, IMO FTP Code (Part 8) with EnviroFlam5

All colorways available

Camira Fabrics partnered with the SEAQUAL INITIATIVE to combat marine plastic pollution. SEAQUAL® YARN is woven entirely from post-consumer recycled plastic. Quest is a balanced hopsack weave enhanced by the discat-dyed SEAQUAL® YARN.

César

Category 2 | CE



Textile mill Aristide

Composition 100% PES

Weight 565 gr/rm

Abrasion Martindale 60,000 rubs (BS 5690)

Light resistance 4

Flammability BS5852, ignition source 0 & 1 (cigarette & match), EN1021, EN1021-1 (cigarette) & EN1021-2 (match)

All colorways available

Aquaclean Aquaclean treatment system covers every single fiber with an invisible molecular coating. This avoids dirt to penetrate the fibers, which helps to maintain the fabric and prolong the life of your sofa cover. Use just water to clean occasional stains like wine, coffee and food.

Upholstery Fabrics

Comeback

Category 2 | CO



Textile Mill Keymer

Composition 86% PL, 9% CO, 5% MA

Abrasion 200.000 Martindale

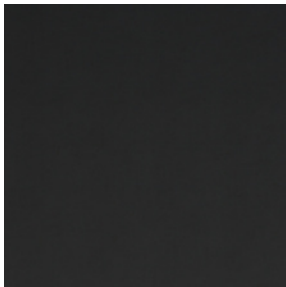
Fastness to light 6

Flammability EN1021 1 & 2

All colorways available

Extrema AU

Category 2 | EX



Textile mill Flukso

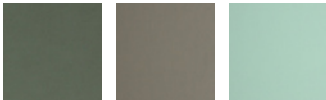
Composition: 63% Polyurethane - 29% COT 8% Polyester

Weight: 480 g/m²

Abrasion: 150.000 Martindale rubs, ISO 12947-2

Fastness to light: 5/6, IISO 105-B02

Flammability UNI 9175 classe 1 IM, EN 1021 part. 1-2, BS 5852 crib 5, BS 5852 Source 1, IMO 2010 FTP CODE | TB 117: 2013



Lario

Category 2 | LAR



By Bulo

Composition 42% cotton, 32% acrylic, 26%. polyester

Weight 980 g/lm

Abrasion 45.000 rubs

Pilling 4 on 5.000 rubs

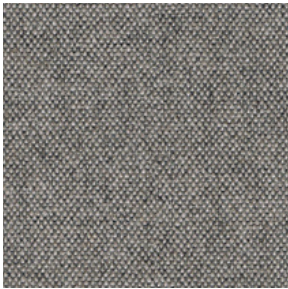
Flammability TB 117 CALIFORNIA, BS 5852 Cigarette
With treatment: BS 5852, Match, CRIB5

All colorways available

Upholstery Fabrics

Mainline Flax

Category 2 | MLF



Textile mill Camira fabrics

Composition 70% Pure New Wool, 30% Flax

Weight 13 oz/sq yd

Abrasion ≥100,000 double rubs, ASTM D4157 Wyzenbeek method

Fastness to light 4, AATCC-16 (40 hours)

Flammability California Technical Bulletin 117 - 2013, NFPA 260 + UFAC Class 1, BS 7176 Low Hazard, ASTM E84 Class 1 or A (Adhered)

All colorways available

Mayoral

Category 2 | MAY



By Bulo

Composition 38%VI 16%WO 13%CO 9%LI 8%PA 7%PC 5%SE 4%PL

All colorways available

Perseide

Category 2 | PER



By Bulo

Composition 35% virgin wool, 7% cotton, 35% acrylic, 23% polyester

Weight 587 g/lm

Sustainability Complies with EU ecolabel "The Flower"

Abrasion 40.000 rubs

Pilling 3-4 on 5.000 rubs

Flammability TB 117 CALIFORNIA, BS 5852 Cigarette

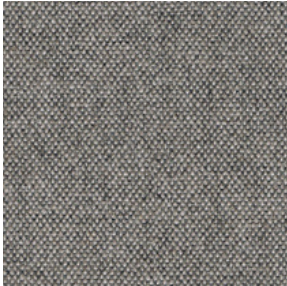
With treatment: BS 5852 Match, 3-4 on 5.000 rubs CRIB5



Upholstery Fabrics

Renew

Category 2 | RN



Textile mill Keymer

Composition 76% pp, 10% pl, 8% ma, 6% co

Rubbing 35.000 Martindale

Light fastness 6

Flammability FR EN 1021 1&2,

Environmental Consists of 70% biodegradable polyolefin and is partially made from recycled yarn.

All colorways available

Tresigallo

Category 2 | TRE



By Bulo

Composition PC 22% WV 22% PL 22% VI 14% CO 13% LI 7%

Bouclé/loop pile fabric

Weight 834 g/lm

Abrasion 30.000 Martindale ISO 12947-2

Pilling 4 5000 rubs ISO 12945-2

Fastness to light 5/6 ISO 105-B02

Flammability BS Cigarette - TB 117 California

Blazer

Category 3 | BL



Textile mill Camira fabrics

Composition 100% Pure New Wool

Weight 13 1/2 oz/sq yd

Abrasion ≥75,000 double rubs, ASTM D4157 Wyzenbeek method

Fastness to light 4, AATCC-16 (40 hours)

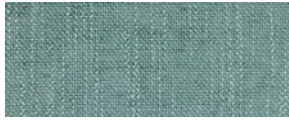
Flammability California Technical Bulletin 117 - 2013, NFPA 260 + UFAC Class 1, BS 7176 Low Hazard, ASTM E84 Class 1 or A (Adhered)

All colorways available

Upholstery Fabrics

Kent

Category 3 | KE



Weight 578 g/rm
Abrasion 100 000

Textile Mill Aristide
Composition 100%PES

Atom



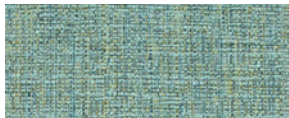
Weight 520 g/rm
Abrasion 100 000

Pilling 4-5

Fastness to light 6

Flammability BS5852, ignition source 0 & 1 (cigarette & match), EN1021, EN1021-1 (cigarette) & EN1021-2 (match)

Castle



Weight 453 g/rm
Abrasion 40 000

Aquaclean Stain resistant. Odor resistant. Moisture resistant. Repels oil and water based spills. Integrated liquid-resistant barrier.

Anti-bacterial and fungal growth resistance.

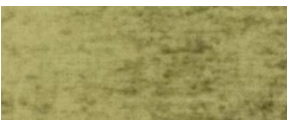
Protection sealed in every fibre. Easy to clean.

Greenguard Gold Certified.

Hulk

Lane

Category 3 | LA

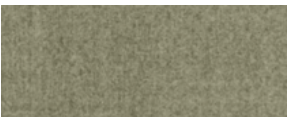


Weight 406 g/rm
Abrasion 50.000 rubs

Textile mill Aristide

Composition 100%PES (velvet) **Pilling** 5
Fastness to light 6/7 **Flammability** BS5852, ignition source 0 & 1 (cigarette & match), EN1021, EN1021-1 (cigarette) & EN1021-2 (match)

Lobo



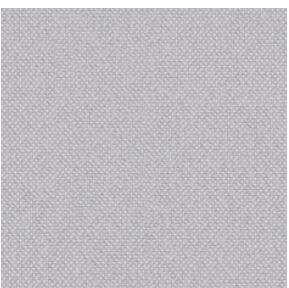
Weight 494 g/rm
Abrasion 90.000 rubs

Crypton technology stain and odor resistant, integrated non-porous moisture barrier, protection against bacteria and odor causing microbes, using silver ion technology, disinfectable, permanent and patented protection engineered on a molecular level, Greenguard Gold certified.

Crystal

Meld

Category 3 | ME



Textile mill Maharam

Composition 68% Post-Consumer Recycled Polyester, 32% Polyester

Finish Stain repellent

Weight 500 g/lm

Abrasion ASTM D4157, 100,000 double rubs Wyzenbeek

Fastness to light AATCC 16E, 40+ hours

Flammability AS/NZS 1530.3, AS/NZS 3837 Unadhered, ASTM E 84 Unadhered, CAL 117-2013, CAN ULC S102 Unadhered

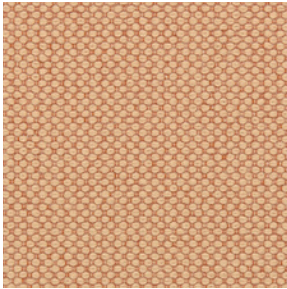
All colorways available

Environmental Greenguard Gold Certified, Greenguard Certified, GRS Certified Content, REACH Compliant, Contains Recycled Content, FR Free

Upholstery Fabrics

Merit

Category 3 | MR



All colorways available

Textile mill Maharam

Composition 76% Post-Consumer Recycled Polyester, 24% Polyester

Weight 17.1 oz/ly (500 gr/lm)

Abrasion ASTM D4157, 100,000 double rubs Wyzenbeek

Fastness to light AATCC 16E, 40+ hours

Flammability AS/NZS 1530.3, AS/NZS 3837 Unadhered, ASTM E 84 Unadhered

BS 476 Unadhered*, BS 5852 Crib 5*, CAL 117-2013, CAN ULC S102 Unadhered

EN 1021-1*, EN 1021-2*, EN 13501 Unadhered*, GB/T 17591*, ISO 5660 Unadhered

NFPA 260, SN 198 898*, *passes with additional treatment

Environmental, Greenguard Gold Certified, GRS Certified Content, REACH Compliant, Contains Recycled Content, FR Free

Remix 3

Category 3 | RE



All colorways available

Textile mill Kvadrat

Composition 90% new wool worsted 10% nylon

Weight 420 g/lm

Abrasion 100.000 Martindale

Pilling 4

Fastness to light 6

Flammability AS/NZS 1530.3, BS 5852 part 1, IMO FTP Code 2010 Part 8, NF D 60

013, NFPA 260, UNI 9175 1IM, US Cal. Bull. 117-2013, EN 1021-1/2, AS/NZS 3837

class 2, ÖNORM B1/Q1, ASTM E84 Class A Unadhered, ASTM E84 Class A Adhered

Re-wool

Category 3 | RW



All colorways available

Textile mill Kvadrat

Composition 5% New wool (worsted), 45% Recycled wool, 10% Nylon

Weight 540 g/lin.m

Sustainability Complies with EU ecolabel "The Flower"

Abrasion 100.000 Martindale

Pilling 4

Fastness to light 7

Flammability BS 5852 Crib 5 with treatment, BS 5852 ignition source 3, BS 5852 part 1,

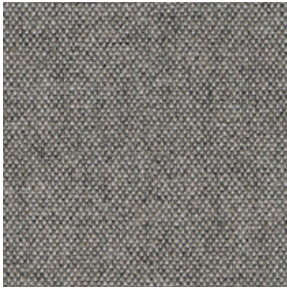
EN 1021-1/2, NF D 60 013, UNI 9175 1IM, US Cal. Bull. 117-2013, ÖNORM B1/ Q1, AS/

NZS 3837 Class 2

Upholstery Fabrics

Arco

Category 4 | AR



All colorways available

Textile mill Rohi

Composition 95% virgin wool 5% polyamide

Weight 700 g/m² - 980 g/lm

Abrasion 70.000 rubs ISO 12947-2

Fastness to light ≥ 5 ISO 105-B02 (yarn dyed)

Flammability wool is naturally flame retardant. Rohi wool fabrics satisfy the following standards with no additional flame retardant finish: CAL TB 117 - 2013, DIN EN 1021-1/ -2, BS 5852 part 1: 1979, UNI 9175 1 IM, IMO 2014/90/EU, Marine Equipment Directive (MED)

Canvas 2

Category 4 | CA



All colorways available

Textile mill Kvadrat

Composition 90% New wool (worsted), 10% Nylon

Weight 480 g/lin.m

Abrasion 100.000 Martindale

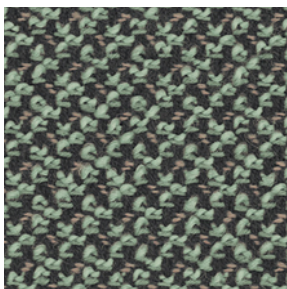
Pilling 4

Fastness to light 6

Flammability AS/NZS 1530.3, BS 5852 part 1, EN 1021-1/2, IMO FTP Code 2010 Part 8, NF D 60 013, NFPA 260, SN 198 898 5.3 with treatment, UNI 9175 1IM, US Cal. Bull. 117-2013, ÖNORM B1/ Q1, BS 5852 ignition source 3, BS 5852 Crib 5 with treatment

Cleo

Category 4 | CL



All colorways available

Textile mill Rohi

Composition 95% virgin wool 5% polyamide

Weight 690 g/m² - 970 g/lm

Sustainability natural, renewable material, IWTO Guidelines for Wool Sheep Welfare, RAL DE-UZ 117 Att. 3b for "Blue Angel", without flame retardant AB 2998 (US export standard), REACH (EU export standard)

Abrasion 70.000 rubs ISO 12947-2

Pilling ≥ 4-5 ISO 12945-2

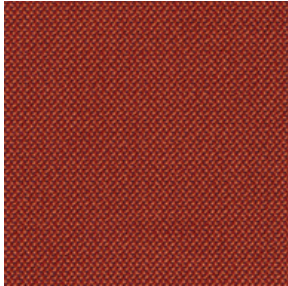
Fastness to light ≥ 5 ISO 105-B02 (yarn dyed)

Flammability wool is naturally flame retardant, rohi wool fabrics satisfy the following standards, with no additional flame retardant finish:., CAL TB 117 – 2013, DIN EN 1021-1/ -2, BS 5852 part 1: 1979, UNI 9175 1 IM, ÖNORM B1/Q1, IMO 2014/90/EU Marine Equipment Directive (MED)NZS 3837 Class 2. With additional flame retardant finish: BS 5852: 2006 Crib5, DIN 4102-1 B2, DIN EN 13501-1 E, FAR 25.853 12 sec. vertical, BKZ 5.3 SN 198898

Upholstery Fabrics

Credo

Category 4 | CR



Textile mill Rohi

Composition 95% New Wool, 5% PA (polyamide)

Weight 610 g/m² - 870 g/lfm

Abrasion 100.000 rubs, ISO 12947-2

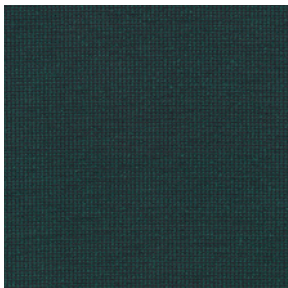
Pilling ≥ 4-5, ISO 12945-2

Fastness to light ≥ 5, ISO 105-B02

Flammability FAR 25.853 (12 sec. vertical), CAL TB 117 - 2013, DIN 4102-1 B2, DIN EN 13501-1, DIN EN 1021 -1 und -2, BS 5852:1979 (part1), BS 5852:2006 (part2) Crib5, BKZ: 5.3 SN 198898, UNI 9175 (1 IM), NF P92 503-507 M2, IMO: 2014/90/EU Marine Equipment Directive

Encircle

Category 4 | EN



Textile mill kvadrat

Composition 100% Trevira CS

Weight 560 g/m² (18.06 oz/sq ft)

Sustainability Greenguard Gold, HPD, EPD

Abrasion 80,000 Martindale

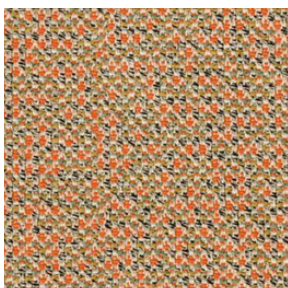
Pilling 4 (ISO 1-5)

Fastness to light 6

Flammability BS 5852 Crib 5 • AS/NZS 3837 class 1 • DIN 4102 B1 • IMO FTP Code 2010 Part 8 • NF P 92 507 M1 • NFPA 701 • ÖNORM B1/Q1 • NF D 60 013 • SN 198 898 5.2 • EN 1021-1/2 • UNI 9175 1IM • US Cal. Bull. 117-2013 • ASTM E84 Class A Unadhered • BS 5867 part 2 type B • EN 13501-1, B-s1, d0 • CAN ULC S102 • CAN ULC S109

Mica

Category 4 | MI



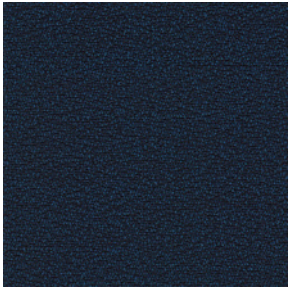
Textile mill Rohi

Composition 95% virgin wool 5% polyamide **Weight** 600 g/m² - 840 g/lfm **Abrasion** ≥ 70.000 rubs ISO 12947-2 **Pilling** ≥ 4-5 ISO 12945-2 **Fastness to light** ≥ 5 ISO 105-B02 (yarn dyed) **Flammability** wool is naturally flame retardant, rohi wool fabrics satisfy the following standards with no additional flame retardant finish: CAL TB 117 – 2013 DIN EN 1021-1/ -2, BS 5852 part 1: 1979, UNI 9175 1 IM, ÖNORM B1/Q1, IMO 2014/90/ EU Marine Equipment Directive (MED). With additional flame retardant finish: BS 5852: 2006 Crib5, DIN 4102-1 B2, DIN EN 13501-1 E, FAR 25.853 12 sec. vertical

Upholstery Fabrics

Shake

Category 4 | SH



Textile mill Rohi

Composition 95% WV 5% PA

Weight 440 g/m² - 660 g/lm

Abrasion ≥ 70.000 rubs ISO 12947-2

Pilling ≥ 4-5, ISO 12945-2

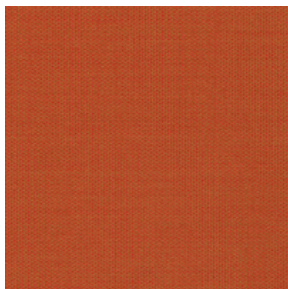
Fastness to light ≥ 5, ISO 105-B02 (yarn dyed)

Flammability CAL TB 117 - 2013, DIN EN 1021 -1 / -2, BS 5852:1979 (part1), UNI 9175 (1 IM), ÖNORM B1/Q1, IMO 2014/90/EU Marine Equipment Directive.

All colorways available

Topia

Category 4 | TP



Textile mill Rohi

Composition 95% Wool, 5% PA

Weight 440 g/m² - 660 g/lfm

Abrasion 50.000 rubs, ISO 12947-2

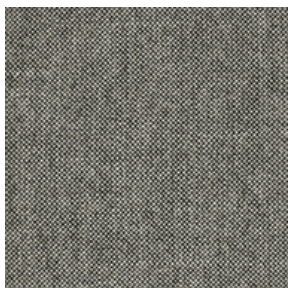
Pilling ≥ 4-5, ISO 12945-2

Fastness to light ≥ 5, ISO 105-B02

Flammability FAR 25.853 (12 Sek. vertikal), CAL TB 117 - 2013, DIN 4102-1 B2, DIN EN 13501-1, DIN EN 1021 -1 and -2, BS 5852:1979 (part1), BS 5852:2006 (part2) Crib5, BKZ: 5.3 SN 198898, UNI 9175 (1 IM), IMO: 2014/90/EU Marine Equipment Directive, Train: EN 45545-2 R21 ISO 5660-1 (HL3)

Hallingdal 65

Category 5 | HA



Textile mill Kvadrat

Composition 70% New wool, 30% Viscose

Weight 795 g/lin.m

Sustainability Complies with EU ecolabel "The Flower"

Abrasion 100.000 Martindale

Pilling 3-4

Fastness to light 7

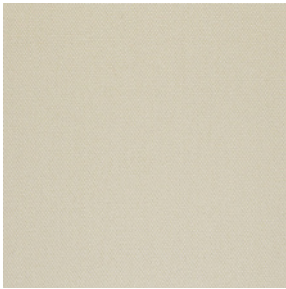
Flammability AS/NZS 1530.3, BS 5852 Crib 5, BS 5852 part 1, EN 1021-1/2, IMO FTP Code 2010 Part 8, NF D 60 013, NFPA 260, SN 198 898 5.3 with treatment, UNI 9175 1IM, US Cal. Bull. 117-2013, ÖNORM B1/ Q1, BS 5852 ignition source 3

All colorways available

Upholstery Fabrics

Steelcut 3

Category 5 | CT



All colorways available

Textile mill Kvadrat

Composition 90% New wool (worsted), 10% Nylon

Weight 825 g/lin.m

Sustainability Complies with EU ecolabel "The Flower"

Abrasion 100.000 Martindale

Pilling 3-4

Fastness to light 6

Flammability AS/NZS 3837, class 2, BS 5852 part 1, EN 1021-1/2, IMO FTP Code 2010 Part 8, NF D 60 013, SN 198 898 5.3 with treatment, UNI 9175 1IM, US Cal. Bull. 117-2013, ÖNORM B1/ Q1, BS 5852 Crib 5 with treatment, NFPA 260, AS/NZS 1530.3

Steelcut Trio 3

Category 5 | TR



All colorways available

Textile mill Kvadrat

Composition 90% New wool (worsted), 10% Nylon

Weight 770 g/lin.m

Sustainability Complies with EU ecolabel "The Flower"

Abrasion 100.000 Martindale

Pilling 4

Fastness to light 5

Flammability AS/NZS 3837, class 2, BS 5852 part 1, EN 1021-1/2, IMO FTP Code 2010 Part 8, NF D 60 013, NFPA 260, SN 198 898 5.3 with treatment, UNI 9175 1IM, US Cal. Bull. 117-2013, ÖNORM B1/ Q1, BS 5852 Crib 5 with treatment, AS/NZS 1530.3, BS 5852 ignition source 3

Vidar 4

Category 5 | VI



All colorways available

Textile mill Kvadrat

Composition 94% new wool 6% nylon

Weight 770 g/m2 (24.84 oz/sq ft)

Sustainability Complies with EU ecolabel "The Flower"

Abrasion 100,000 Martindale

Pilling 4 (ISO 1-5)

Fastness to light 7

Flammability BS 5852 crib 5 with treatment • BS 5852 part 1 • IMO FTP Code 2010 Part 8 • NF D 60 013 • NFPA 260 • UNI 9175 1IM • US Cal. Bull. 117-2013 • EN 1021-1/2 • AS/NZS 3837 class 2 • GB 50222 B1 with treatment (Chinese) • SN 198 898 5.3 with treatment • IMO FTP Code 2010 Part 7 with treatment • NFPA 701 with treatment

Upholstery Fabrics

Judith

Category 6 | JUDCR



Textile mill Pierre Frey

Composition 79% Wool - 21% Cotton Bouclé/loop pile fabric **Weight** 1181 g/lm

Abrasion > 50.000 Martindale **Flammability** BS5852 Cigarette & Match test - BS5852 Cigarette test - CRIB 5, in conjunction with suitable combustion modified foam - NFPA 260 - Class 1 - EN1021-1-20

Louison

Category 7 | LOUCR



Textile mill Pierre Frey

Composition 41% Wool - 39% Alpaca - 17% Cotton - 3% Acrylic

Weight 1349 g / ml

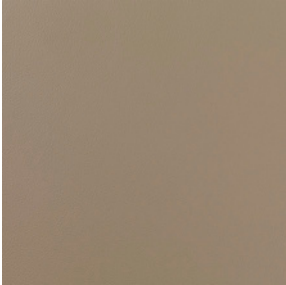
Bouclé/loop pile fabric

Abrasion > 50.000 Martindale

Flammability BS5852 Cigarette & Match test - BS5852 Cigarette test - CRIB 5, in conjunction with suitable combustion modified foam - NFPA 260 - Class 1 - EN1021-1-20

Upholstery Leather

Sand grey



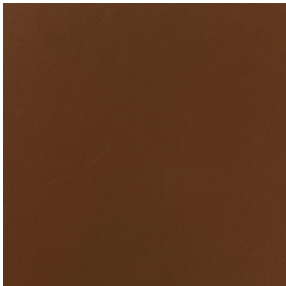
Dark green



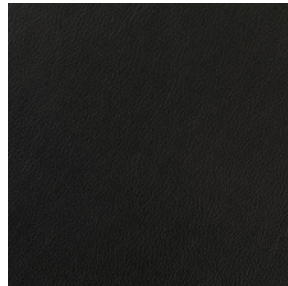
Dark brown



Tobacco



Black



Origin European bullhides

Thickness 1.0/1.2 mm

Surface Pigmented nappa leather

Flammability BS 5852 PART 1 (ignition source 0 and 1)
EN 1021-1 and 1021-2
CAL TB 117:2013

Leather is a natural material with natural variation in color and surface structure. No two are alike. A variety of markings like healed scars and abrasions may be visible and are not considered defects but are characteristics of genuine leather. On inquiry and at a surcharge, other leather colors than our standard colors may be available.

COM / COL

Customer's own material/leather Customers can supply their own fabric or own leather if preceded by consultation with Bulo or your Bulo partner. Bulo reserves the right to reject the COM/COL we find unsuitable. Warranty conditions on COM/COL available on request.

Fabric requirement for 1 Monica chair: l. 2,8 m/111" x x 1,4 m/55" Leather requirement available on request, depending on type and quantity of chairs